



Dear Community Members, Patrons and Colleagues,

Although the discussion of Human Trafficking is in no way regarded as a comfortable topic in any given setting, *especially* as it pertains to our children; the formerly apathetic response and failure to address Child Sex Trafficking that takes place domestically became the catalyst for me to tackle what has evolved into a modern version of slavery head-on. With research estimating that up to **300,000 American children were at risk each year to be trafficked within the borders of the United States alone**, an urgent and local need to develop advocacy on behalf of children without a voice presented itself.

The launch of the foundation, Redefining Refuge in 2010, has since sparked a contagious willingness from participants around the world who share our same resolve in confronting and ultimately preventing Human Trafficking. Our goal of opening a local Safe House for sex trafficked youth was realized in early 2013 and was the first licensed home of its kind in the Tampa Bay and surrounding areas that continues to provide a therapeutic safe haven to American girls ages 12 -17 that are rescued from this depravity.

Since its inception, Redefining Refuge has been featured on a WEDU Documentary highlighting our organization's local advocacy efforts as well as the alarming prevalence of Sex Trafficking in Tampa Bay ([www.wedu.org/humantrafficking](http://www.wedu.org/humantrafficking)). We have had the honor and privilege of being invited to the State's Capitol to present both the challenges and successes of providing Safe Housing to Minor Victims of Sex Trafficking to The Florida House of Representatives Healthy Families Subcommittee as well as the Florida Stands Against Human Trafficking Legislative Caucus; and were featured as a Resource Provider during the 2013 and 2015 Statewide Human Trafficking Summit's at the University of South Florida. More recently we were invited to Washington, DC to represent the State of Florida during the Shared Hope International JuST Response Congressional Briefing: Mapping State Responses to Sex Trafficked Youth.

While we are exceedingly thankful for the opportunity to provide real and lasting change for these children by means of our Safe House Program, Schooling Program and legislative input; ***none of this would be possible without the support of people just like you!*** In the ensuing pages, we invite you to get to know Redefining Refuge and look forward to partnering with you to '***Be the Beginning of an End***' to an unimaginable injustice that is sadly affecting the children in our city!

***"I swore never to be silent whenever and wherever human beings endure suffering and humiliation. We must always take sides. Neutrality helps the oppressor, never the victim. Silence encourages the tormentor, never the tormented."***

Sincerely,

Natasha Nascimento  
Founder/Executive Director



**A Specialized Non-Profit  
Service Provider and  
Advocacy Agency for  
Sexually Exploited and  
Trafficked Youth.**



## WHO WE ARE



### Restoring Hope

We provide all fundamental needs in a safe, loving and nurturing environment; as well as treatment and recovery options to girls who have been exposed to Sex Trafficking.



### Empowering Individuals

Through strong community alliances, we proudly provide scholarships, tattoo "branding" removal and mentorship for up to one year.



### Defending Innocence

We actively engage in community awareness, prevention and outreach events that educate the public about Sex Trafficking



## KNOW THE FACTS

Researchers estimate that between 100,000 and 300,000 American children are trafficked within the U.S. each year (Child Exploitation and Obscenity Section, 2007)

Florida is commonly known amongst law enforcement personnel to have one of the highest incidences of human trafficking in the country. The Clearwater/Tampa Bay area has been identified specifically as a region struggling with these issues (Shared Hope International)

As many as 2.8 million children live on the streets, a third of whom are lured into prostitution within 48 hours of leaving home (Child Exploitation and Obscenity Section, 2007)

The lives of child prostitutes are almost too appalling to confront. Studies indicate that child prostitutes serve between two and thirty clients per week, leading to a shocking estimated base of anywhere between 100 to 1500 clients per year, per child. (Child Exploitation and Obscenity Section, 2007)

The average age at which girls first become victims of prostitution is 12-14. It is not only the girls on the streets that are affected — for boys; the average age of entry into prostitution is 11-13. (Child Exploitation and Obscenity Section, 2007)



## IN OUR BACKYARDS

When most people are asked the looming question of, “What is trafficking,” the typical response is that it involves sex trade in foreign countries, with foreign women. Most would be surprised to know that it is happening right here in the United States with American born individuals, many of whom are children. What most are also not aware of is that the term trafficking does not need to involve movement outside of this country, or even this state. Many are unaware that the exploitation of children is occurring right in their backyards, on their streets, and in their communities; and are largely unaware that their children are going to school where pimps may be lurking, looking for their next victim.

## OUR SAFE HOUSE

We provide all fundamental needs in a safe, loving and nurturing environment and accommodate girls ages 12-17 who have been identified as victims of Commercial Sexual Exploitation by means of Human Trafficking.

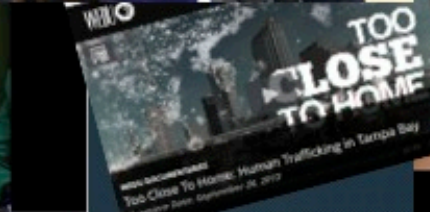
We provide weekly therapeutic group and individual counseling sessions centered around Trauma Informed Care, Stockholm Syndrome and Post Traumatic Stress Disorder as well as 24/7 Crisis Intervention

We provide basic life skills, mentoring, coaching, schooling, tutoring resources and educational needs.



## OUR SCHOOLING CENTER

For safety precautions, the young girls that we serve are unable to attend a traditional public school setting. As a result, we have an offsite location where we proudly provide a customized schooling plan that is academically appropriate. This is designed to meet their current level of education and provides a solid foundation from which to pursue higher education and/or career goals.



# IN THE MEDIA

A HEARTFELT THANK YOU TO OUR COMMUNITY PARTNERS WHO MAKE IT POSSIBLE FOR US TO ADVOCATE EACH DAY ON BEHALF OF CHILDREN WITHOUT A VOICE





Dear Sir/Madam,

In honor of our ongoing Anti-Human Trafficking efforts, Redefining Refuge™ is currently planning our 6<sup>th</sup> Annual Bubbles and Butterflies Gala to be held April 22<sup>nd</sup>, 2017 at the immaculate Glazer Children's Museum in Downtown Tampa. The success of this delightful event is credited largely to our sponsors, who graciously lend their names and financial support to the event. The funds raised during this event will enable us to provide assistance to children **in our very own community**, whose lives are being adversely affected by the heinousness of the sex trafficking industry.

By participating as a sponsor, your organization will benefit from extended showcased exposure through media campaigns and all promotional efforts directed toward the supporters of Redefining Refuge™.

For a small contribution, you'll be able to enjoy exceptional exposure to this important segment of your target audience by simultaneously making a difference.

Our sponsorship packages are adaptable to meet the needs of your organization, and are available in seven different giving levels. Please see a detailed description of these packages in the enclosed sponsorship commitment form.

We greatly appreciate you considering our proposal for sponsorship, and are looking very forward to gaining your avid support. Should you have any questions at all, please do not hesitate to contact us at your earliest convenience.

Thank you in advance for your willingness to support our efforts, and for *making a difference by being a difference*.

Sincerely,

Natasha Nascimento  
Founder/Executive Director  
Redefining Refuge, Inc.  
18948 N. Dale Mabry Hwy, Suite  
101 Lutz, FL 33548  
O: (813) 909-0300  
C: (813) 778-4916  
[www.redefiningrefuge.org](http://www.redefiningrefuge.org)



## Sponsorship Commitment Form

\*\*\*Can also be completed online at [www.RedefiningRefuge.org](http://www.RedefiningRefuge.org)

**Organization Name** ((As it should appear on all Marketing, Advertising & Program materials):

---

**Organization Contact Person:**

---

**Contact Email and Phone #:**

---

**Contact Address:**






---

### **Corporate Sponsorship Levels:**

(Please Circle Your Selection)

## **Monarch Level**

**~ \$8,000**

-  Fourteen (14) Event Tickets
-  Press Release Distributed by Redefining Refuge Announcing Sponsorship
-  Verbal and Visual Recognition During Event Program
-  Full Color Ad in Event/Auction Program
-  Premier Placement of Presenting Sponsor Name/Logo on:
  - E-Communications/E-vite and Facebook
  - Redefining Refuge Website with Link to Sponsor Website
  - All Collateral Materials
  - Event Signage and Banners



## Brush-footed Level

~ \$5,000

- 🦋 Ten (10) Event Tickets
- 🦋 Verbal and Visual Recognition During Event Program
- 🦋 Full Color Ad in Event/Auction Program
- 🦋 Premier Placement of Presenting Sponsor Name/Logo on:
  - E-Communications/Evite and Facebook
  - Redefining Refuge Website with Link to Sponsor Website
  - Event Signage and Banners

## Swallowtail Level

~ \$3,000

- 🦋 Eight (8) Event Tickets
- 🦋 Placement of Presenting Sponsor Name/Logo on:
  - Redefining Refuge Facebook Page
  - Redefining Refuge Website with Link to Sponsor Website
  - Event Signage and Banners

## Morph Level

~ \$1,000

- 🦋 Six (6) Event Tickets
- 🦋 Placement of Presenting Sponsor Name/Logo on:
  - Redefining Refuge Facebook Page
  - Redefining Refuge Website with Link to Sponsor Website

## Signature Drink Sponsorship

~ \$2,500

- 🦋 Name and Signage Displayed at Designated Serving Areas
- 🦋 Placement of Presenting Sponsor Name/Logo on:
  - Cocktail Napkins
  - Redefining Refuge Facebook Page
  - Redefining Refuge Website with Link to Sponsor Website

## Valet Sponsorship

~ \$2,000

- 🦋 Name and Premier Signage Displayed at Designated Valet Areas
- 🦋 Placement of Presenting Sponsor Name/Logo on:
  - Valet Stand
  - Redefining Refuge Website with Link to Sponsor Website

## Cigar Bar Sponsorship

~ \$1,000

- 🦋 Name and Signage Displayed at Designated Cigar Bar
- 🦋 Placement of Presenting Sponsor Name/Logo on:
  - Cigar Wrappers
  - Redefining Refuge Website with Link to Sponsor Website

## Bourbon Bar Sponsorship

~ \$1,000

- 🦋 Name and Signage Displayed at Designated Bourbon Bar
- 🦋 Placement of Presenting Sponsor Name/Logo on:
  - Cocktail Napkins
  - Redefining Refuge Website with Link to Sponsor Website

**Sponsorship Amount:** \$ \_\_\_\_\_ **In-Kind Donation Value:** \$ \_\_\_\_\_  
*(Please provide approximate value if donating in-kind)*

### Payment by Check:

Check Enclosed?                      Yes      No  
Yes: Check # \_\_\_\_\_      No: Check will be sent via mail

Please send completed form and check (Payable to Redefining Refuge) to:  
Redefining Refuge  
18948 N. Dale Mabry Hwy, Suite 101  
Lutz, FL 33548

### Payment by Credit Card:

The security and privacy of your information is of utmost importance to us, therefore if you wish to utilize this option, we ask that you please visit our website at [www.redefiningrefuge.org](http://www.redefiningrefuge.org) to enter your payment information via a secure server.

### Additional Information:

- Please email your logo in either eps or jpg format (**300 dpi or higher**) to [Kristin@RedefiningRefuge.org](mailto:Kristin@RedefiningRefuge.org)
- Please email your guests names to [Kristin@RedefiningRefuge.org](mailto:Kristin@RedefiningRefuge.org)
- **Questions?** Contact our Main office at 813-909-0300

**Authorization:** By signing below, you confirm your company's commitment to sponsor the 6<sup>th</sup> Annual Bubbles and Butterflies Gala.

\_\_\_\_\_  
Name & Signature

\_\_\_\_\_  
Date

Special Thank you to our 2015 Sponsors

**AFFORDABLE DENTURES & IMPLANTS**  
AFFORDABLE DENTURES-TAMPA, P.A.  
Jose R. Hackney, DMD, MICOI, MIPS  
General Dentist

**WILKES & MCHUGH, P.A.**  
ATTORNEYS AT LAW

**COURTESY AUTOGROUP**

**DEBARTOLO FAMILY FOUNDATION**

**Redefining Refuge**  
Be the BEGINNING of an END

**spin**  
SOUTHEAST FLORIDA REAL ESTATE NETWORK  
Real estate at full throttle.

**TECO ENERGY**

**KASE WEALTH ADVISORS**

**Smith & Associates Real Estate**

**DEFENDTAMPA.COM**  
LAW FIRM  
813.800.1111

**COLLEGE HUNKS HAULING JUNK**

**COLLEGE HUNKS MOVING**

**Englander Fischer attorneys**  
Big Firm Experience. Boutique Services.  
2015 Ave. Howard Blvd. | 30th Fl. | St. Petersburg, FL 33701 | 727.208.1212 | E.Flegal.com

**Bajo | Cuva | Cohen | Turkel**  
ATTORNEYS AT LAW

**Tampa Wedding Cars**

**COURTESY AUTOGROUP**

**AFFORDABLE DENTURES & IMPLANTS**  
AFFORDABLE DENTURES-TAMPA, P.A.  
Jose R. Hackney, DMD, MICOI, MIPS  
General Dentist

**WILKES & MCHUGH, P.A.**  
ATTORNEYS AT LAW

**spin**  
SOUTHEAST FLORIDA REAL ESTATE NETWORK  
Real estate at full throttle.

**TECO ENERGY**

**KASE WEALTH ADVISORS**

**DEBARTOLO FAMILY FOUNDATION**

**Syniverse**  
We make mobile work

**Ciccio - CALI -**

**ACE VIDO**

**Arthur Murray**

**THE FLORIDA AQUARIUM DOWNTOWN TAMPA**

**Project 67**  
FOR THE LOVE OF BIKES

**KASE WEALTH ADVISORS**

**AFFORDABLE DENTURES & IMPLANTS**  
AFFORDABLE DENTURES-TAMPA, P.A.

**Redefining Refuge**  
Be the BEGINNING of an END

**Flutter into Fall**  
5K FUN RUN | 1K FAMILY WALKATHON

**LEVERAGE DIGITAL**

**CRG CICCIO RESTAURANT GROUP**

**BAY JANITORIAL SERVICE**

**Panera BREAD**

**Target**

**maveli DESIGNS**

**CORNERSTONE**  
AIR CONDITIONING - PLUMBING - ELECTRICAL  
www.cornerstonepros.com